

Monthly PAX Trends Snapshot

OCT 2013



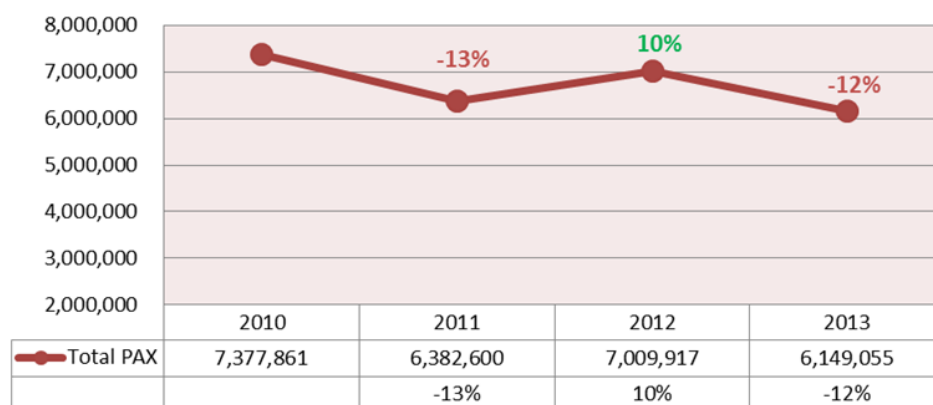
شركة مطار البحرين
bahrain airport company

Snapshots will be sent to our readers on a monthly basis.

Our aim is to constantly keep you updated and informed on key passenger data, trends and highlights for the concerned month.

We hope you find our Snapshots informative as we continue to improve and enhance its content.

**(Jan-Oct) Cumulative Y-O-Y Total PAX
(2010-2013)**



Source: Traffic Movement Sheet, BAS; compilation and analysis by Commercial and Marketing, BAC.

- ✈ October 2013 Total PAX amounted to 635,449.
- ✈ Jan-Oct 2013 Total PAX cumulative amounted to 6,149,055.
- ✈ 2012-2013 (Jan-Oct) Total PAX cumulative witnessed a decline of 12% (or 860,862).
- ✈ 2010-2013 (Jan-Oct) Total PAX cumulative witnessed a decline of 17% (or 1,228,806).
- ✈ The main highlight of the month was the occurrence of Eid Al-Adha. Although there has been a 15% decline in Total PAX compared to the same period last year, there has been a growth of 11% or 64,249 from September 2013.

2012-2013 Total PAX witnessed a decrease of 15% (or 110,350).

The main highlights of the month were:

RUH: -41% (or 16,123) in Total PAX:

- Disembarking: down 36% (or 7,210).
- Joining: down 44% (or 8,578).
- Gulf Air was the main airline contributing to the decline.

DXB: -13% (or 15,824) in Total PAX:

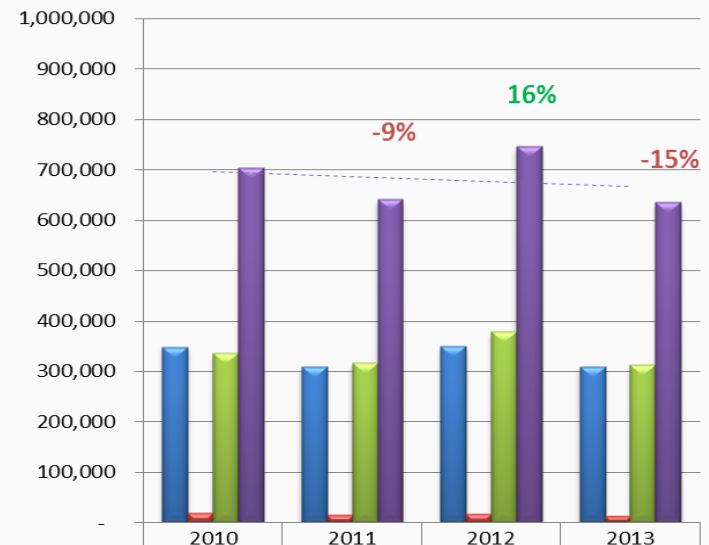
- Disembarking: down 10% (or 5,779).
- Joining: down 16% (or 10,045).
- Gulf Air was the sole airline contributing to the decline.

NJF: +106% (or 7,725) in Total PAX:

- Disembarking: up 289% (or 5,655).
- Joining: up 39% (or 2,070).
- Most of the increase was due to Iraqi Airways, followed by Gulf Air.

Note: above we focused on commenting on currently scheduled operating airlines. However, it is worth noting that Bahrain Air's closure played a hefty part in these declines.

October Y-O-Y PAX Trends (2010-2013)



	2010	2011	2012	2013
Disembarking	347,886	309,478	348,893	309,209
Transit	19,856	15,030	18,077	12,606
Joining	335,400	316,540	378,829	313,634
Total	703,142	641,048	745,799	635,449

Top 10 Airports Rank Displacement (Jan-Oct):

# Airport	2012 Vs. 2013
1 DXB	-
2 DOH	-
3 KWI	-
4 AUH	(1)
5 MCT	(2)
6 RUH	2
7 BOM	1
8 LHR	-
9 DMM	-
10 DEL	(3)

Top 10 Airports Growth/Decline (OCT 2012-2013):

Rank	Airport	Total PAX	Airport	Total PAX
1	NJF	7,725	RUH	(16,123)
2	BGW	2,160	DXB	(15,824)
3	DOH	1,997	MNL	(6,407)
4	AMS	1,985	DMM	(6,082)
5	DEL	1,274	KWI	(4,293)
6	SHJ	1,247	KRT	(4,093)
7	JED	936	COK	(3,975)
8	IST	879	CAI	(3,858)
9	MCT	792	BOM	(3,705)
10	LCA	732	CMB	(2,953)